

MONTHLY MEMBERSHIP PROGRESS REPORT

LOCATION INDIA

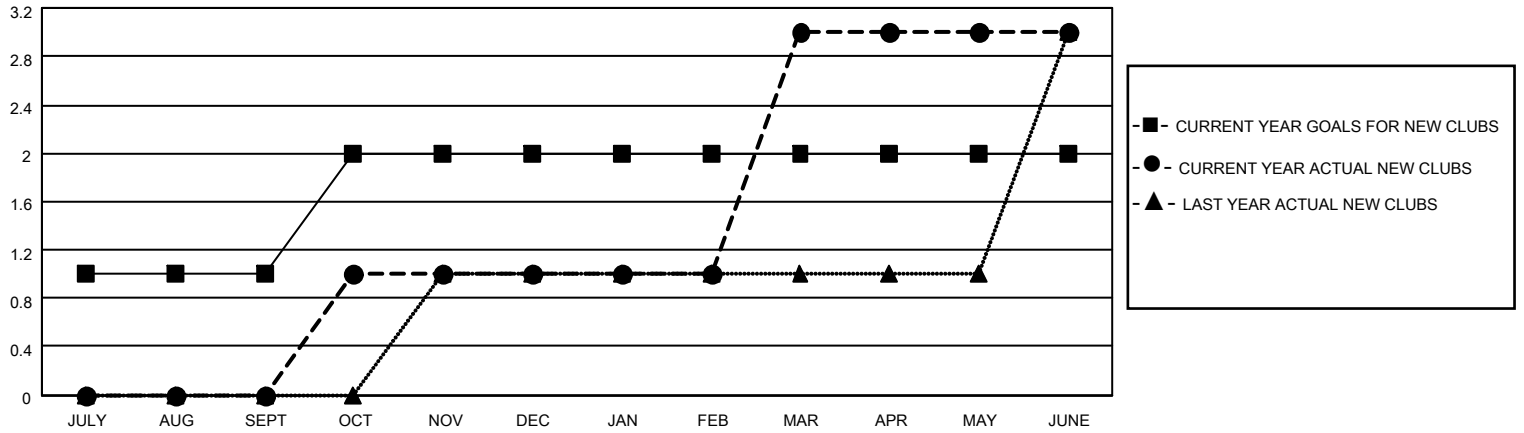
District 316 G

Results as of: 6/30/2023

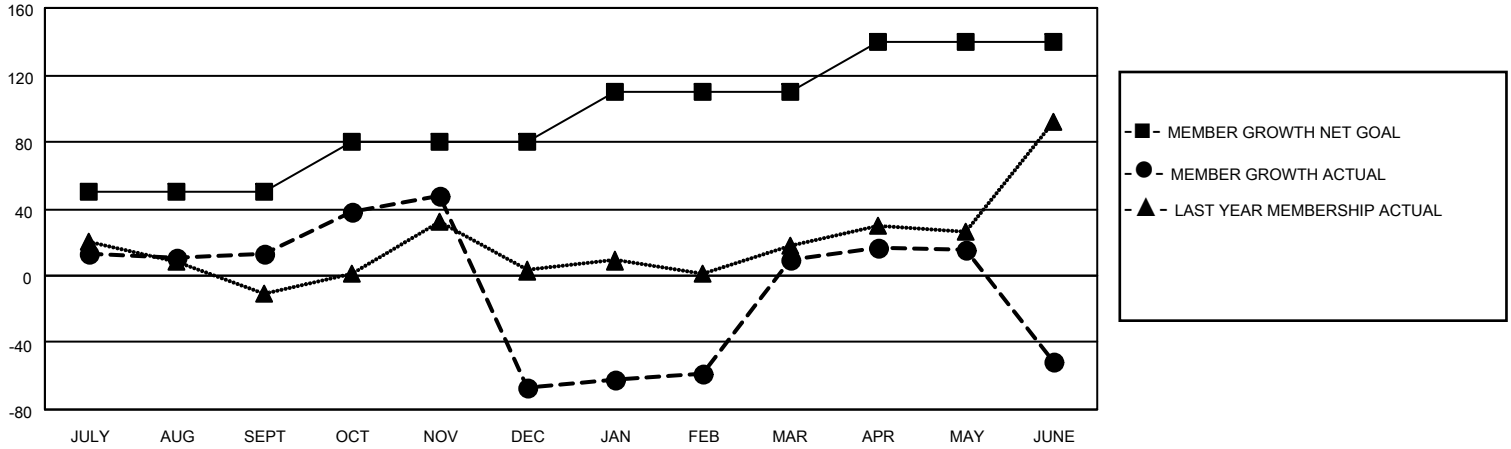
Clubs			
RESULTS FOR 2022-2023			
QUARTER	NEW CLUB GOAL	NEW CLUBS	DROPPED CLUBS
JULY/AUG/SEPT	1	0	2
OCT/NOV/DEC	1	1	3
JAN/FEB/MAR	0	2	0
APR/MAY/JUNE	0	0	1

Members			
RESULTS FOR 2022-2023			
QUARTER	MEMBER GROWTH NET GOAL	MEMBER GROWTH ACTUAL	DROPPED MEMBERS ACTUAL (including transfers)
JULY/AUG/SEPT	50	67	51
OCT/NOV/DEC	30	57	136
JAN/FEB/MAR	30	100	2
APR/MAY/JUNE	30	73	131

GOALS AND ACTUAL NEW CLUBS CUMULATIVE



GOALS AND ACTUAL MEMBERS CUMULATIVE



DROPPED CLUBS: 6

54 CLUBS OF 71 ADDED 1 OR MORE NEW MEMBERS

GENDER DISTRIBUTION

MALE	2,078 (80.08%)
FEMALE	517 (19.92%)
NON BINARY	0 (0.00%)
PREFER NOT TO ANSWER	0 (0.00%)

DROPPED MEMBERS

[CLICK HERE FOR CUMULATIVE MEMBERSHIP DATA](#)

DECEASED	25
CLUB CANCELLED	104
OTHER	191
TOTAL	320

TOTAL FAMILY UNIT MEMBERS	1,179
FAMILY MEMBERS PAYING HALF DUES	752